



CHARTER CAPTAINS MEETING

Patrick Banks, Myron Fischer, and Jason Adriance

January 2017

Agenda

- Call meeting to order
- Opening comments
- Introduction of LDWF and LSU staff
- Brief introduction of meeting goals and rules
- Gulf Council and Federal Issues
 - Electronic reporting requirements
 - Amendment 41
 - Species specific issues
 - Snapper
 - Triggerfish
 - HMS
- Logbook pilot
- State programs
- Stock assessments
 - Fishery independent data
 - Fishery dependent data
 - La Creel
 - Analysis
- Open discussion – Captains' comments
- Closing comments



COUNCIL/FEDERAL ACTIONS



Electronic Reporting Requirements

STATUS: Scheduled for final action at the January Council meeting in New Orleans

Action 1: Modify Frequency and Mechanism of Data Reporting for Charter Vessels

Preferred Alternative 4. Require that federally permitted charter vessels submit fishing records to NMFS for each trip via electronic reporting (via NMFS approved hardware/software) prior to arriving at the dock.

Action 2: Modify Frequency and Mechanism of Data Reporting for Headboats

Preferred Alternative 4. Require that federally permitted headboats submit fishing records to NMFS for each trip via electronic reporting (via NMFS approved hardware/software) prior to arriving at the dock.



Electronic Reporting Requirements

Action 3: Trip Notification and Reporting Requirements

Hail out:

- Preferred Alternative 2. Prior to departing for each for-hire trip, a vessel is required to declare (hail out) a trip including the expected return time and landing location. (Technical Committee Recommendation)
 - Preferred Option a. Charter vessels
 - Preferred Option b. Headboats

Hail in:

- Preferred Alternative 3. Prior to arriving at the dock/port at the end of each for-hire trip, require the vessel operator to hail in and submit fishing records via electronic reporting. (Technical Committee Recommendation)
 - Preferred Option a. Charter vessels
 - Preferred Option b. Headboats



Electronic Reporting Requirements

Action 4: Hardware/Software Requirements for Reporting Fishing Records and Location

Preferred Alternative 2. Require vessel operators to submit fishing records via NMFS approved hardware/software with minimum archived GPS capabilities that provides vessel position. (Technical Committee Recommendation).

Option a. Charter vessels

Option b. Headboats



Red Snapper Management for Federal Charter Boats (Amendment 41)

STATUS: In progress

Management Alternatives

- Action 1 – Type of Allocation-based Management Program
 - Fishing Quota Program (IFQ or PFQ)
 - Harvest Tag Program
- Action 2 – Program Participation
- Action 3 – Apportioning the Charter Quota to Charter Vessels
- Action 4 – Transferability of Shares
- Action 5 – Maintenance of Shares
- Action 6 – Transferability of Annual Allocation
- Action 7 – Share Caps
- Action 8 – Cap on Usage of Allocation for IFQs/PFQs and Harvest Tags
 - IFQs/PFQs
 - Harvest Tags
- Other Actions for an Allocation-based Program



Joint Charter and Headboat AP Meetings

Re: Amendments 41 and 41

Preferences:

- Consider an allocation-based management approach
- Keep amendments separate but must be implemented together, at the same time (if one fails, the other cannot be implemented)
- Priority species: red snapper, amberjack, triggerfish, gag, red grouper
- Timeframe for implementation: 2019 or 2020, depending on preference initial distribution of allocation (based on proxies or one year of data from electronic monitoring to identify fishing activity)
- Use data from Beaufort survey (headboats only) to determine allocation for participating vessels; include set-aside for headboat vessels not in the survey
- Use proxies to determine allocation for charter vessels (no landings history) then redistribute seasonally/annually/etc.



Gray Triggerfish

- Gulf triggerfish recreational season will remain closed through the end of 2017.
- The 2016 Gulf recreational harvest exceeded the Annual Catch Limit (ACL) by 221,213 pounds
 - The Gulf recreational ACL is 201,223 pounds; 2016 Gulf recreational harvest was an estimated 422,436 pounds.
- Federal accountability measures require a “payback”
- The 2017 ACL and annual catch target (ACT) were set at 241,200 pounds and 217,100 pounds, respectively. Payback of the harvest overage reduces the ACT to zero pounds and the ACL to 19,987 pounds. NOAA Fisheries is required to close the recreational fishery when landings reach or are projected to reach the ACT. So that’s why the recreational fishery is closed for 2017.



Highly Migratory Species

Swordfish reporting requirements

- You **MUST** report swordfish landings to NOAA Fisheries within 24 hours of returning from your trip.
- Report **online at hmspermits.noaa.gov/catchReports** or through the **iPhone app** (search the App Store for Catch Reporting by National Oceanic and Atmospheric Administration)

Dusky shark rule implications (Amendment 5b)

- NOAA Fisheries is **considering** requiring a Shark Endorsement on your HMS permit for all sharks.
- If a charter boat has a permit and endorsement, they **may** have to use circle hooks anytime they are fishing with natural bait and leader over 200 pound test or greater.
- Final rule is not yet published.



Prohibited Shark Species

Atlantic angel shark, sand tiger shark, dusky shark, bigeye sand tiger shark, sixgill shark, largetooth sawfish, bigeye thresher shark, smalltooth sawfish, narrowtooth shark, Caribbean reef shark, white shark, Caribbean sharpnose shark, basking shark, sevengill shark, Galapagos shark, bigeye sixgill shark, smalltail shark, longfin mako, bignose shark, whale shark and night shark.

No sandbar or silky sharks may be retained under a recreational bag limit.



PROVIDING INPUT TO THE COUNCIL



Testimony Best Practices

- Keep it short and to the point; you only have THREE MINUTES when making public comment at Council meetings. However, you can have a Council member ask questions to extend your time at the podium.
- Tell who you are—angler, charter captain, etc. If you're representing a group, state that as well.
- Express your preferences, making sure to provide both an opinion about what you support/don't support AND a solution.
- Sample testimony:
 - gulfcouncil.org/resources/education_faqs/council_outreach_sample_testimony.php



Email / Letter Best Practices

- Stick to one subject—if you'd like to comment on more than one issue, write separate letters.
- Tell who you are—angler, charter captain, etc. If you're representing a group, state that as well.
- Express your preferences, making sure to provide both an opinion about what you support/don't support AND a solution.
- Send email to all 17 voting Council members
 - Contact information: gulfcouncil.org/about/fishery_council_members.php
- Sample email/letter:
 - gulfcouncil.org/resources/education_faqs/council_outreach_sample_letter.php



Voluntary Pilot Electronic Reporting Project

- Collaboration between LDWF and CLS America
- Open to Louisiana federal charter captains
- Goal to transition from paper catch reporting to electronic reporting to improve recreational fisheries data and to enhance LA Creel
- Similar projects in the other Gulf states
- Interested in volunteering?
 - We need 3-5 captains to test the forms and have Bluetooth tablets installed on their boats right now
 - After initial testing, we'd like as many captains as possible to volunteer
- Future meetings with CLS America



A wide-angle photograph of a sunset over the ocean. The sun is a small, bright orange-red disk just above the horizon line. The sky is filled with soft, wispy clouds in shades of orange, yellow, and light blue. The ocean is dark blue with small, choppy waves. The text "ANY QUESTIONS?" is centered in the middle of the image in a white, bold, sans-serif font.

ANY QUESTIONS?

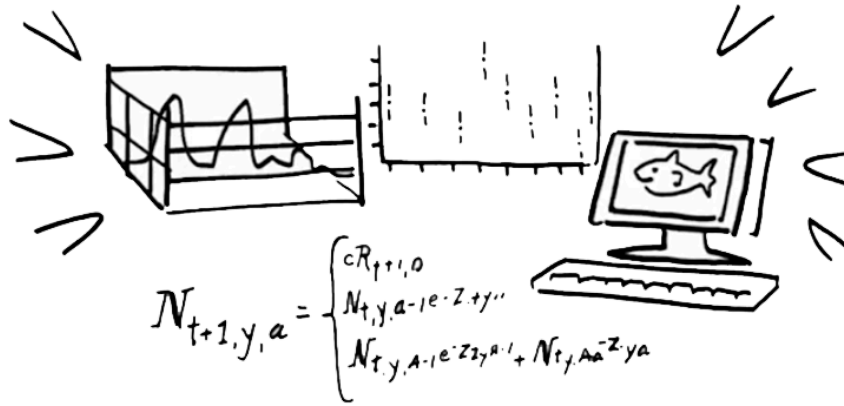
DATA COLLECTION



+ Catch Data



A+B+C= Stock Assessment



Abundance + Biological Data

Stock Assessments

Use two types of data:

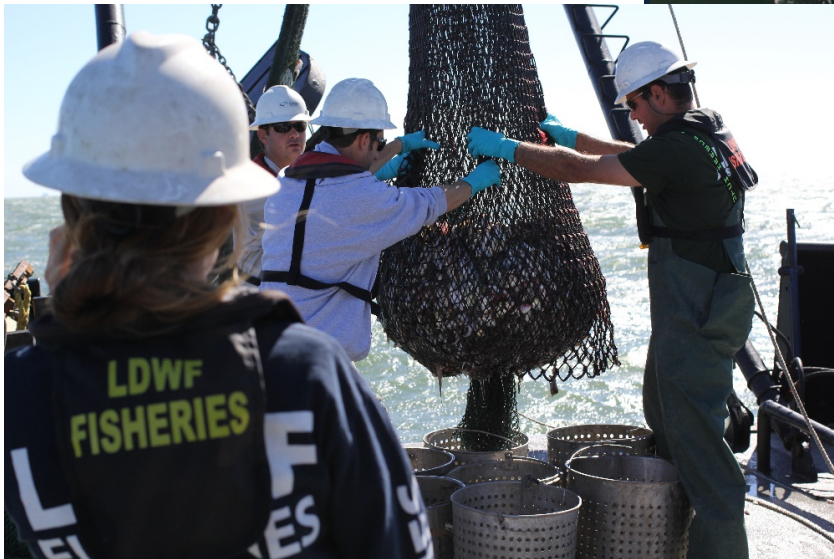
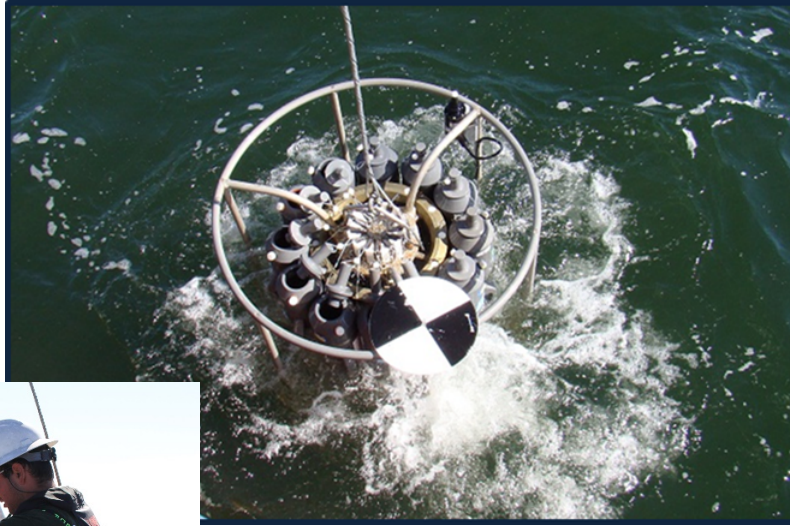
1. Fishery Dependent – data collected from commercial and recreational fishing activities
2. Fishery Independent – data collected through scientific studies such as research cruises



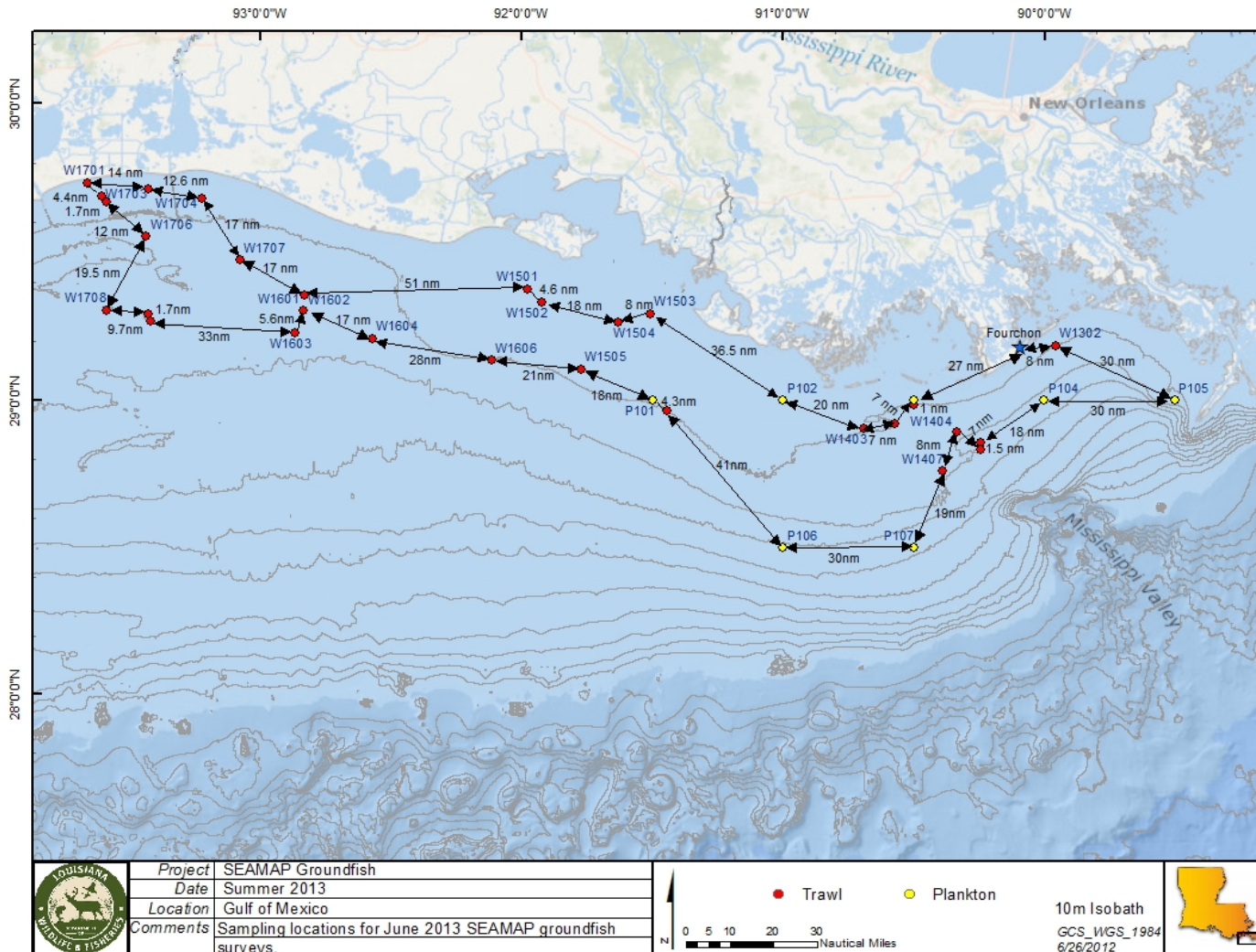
How do we get these data?

Southeast Area Monitoring Assessment Program (SEAMAP) provides fishery independent data from surveys:

- Groundfish
- Plankton
- Bottom Longline
- Vertical Line



SEAMAP Groundfish Survey



SEAMAP Plankton Survey



SEAMAP Bottom Longline Survey



SEAMAP Vertical Line Survey



How do we get these data?

LA Creel provides recreational fishery dependent data

- Dockside interviews plus phone/email surveys to calculate harvest estimates from various fishing activities
- Data collected include:
 - Type of fishing activity (offshore, inshore, charter)
 - Number of anglers on a trip
 - General location of fishing activity
 - Tournament participation
 - Duration of trip
 - Number and species of fish harvested
 - Fish weights, lengths, and other biological data
- Covers state waters including marshes, bays, beaches and nearshore areas as well as offshore, federally-managed waters
- Ability to better target offshore captains and anglers through required (but free!) Recreational Offshore Landing Permit (ROLP)



Help us get better data—participate in LA Creel

- Cooperate with the dockside samplers and on phone/email interviews
- Make sure you have **Charter** ROLP, which is required for charter captains to possess tunas, billfish, swordfish, amberjacks, groupers, snappers, hinds, cobia, wahoo and dolphin. It's free and helps us get better offshore landings data.
 - If you don't already have one, apply at rolp.wlf.la.gov.
 - If you have a Charter ROLP, remember to renew it every year.
 - If you accidentally signed up for a Recreational ROLP, let us know.
 - FYI: Your Charter ROLP covers your charter clients; they do not need a separate ROLP.



THANK YOU FOR PARTICIPATING!

