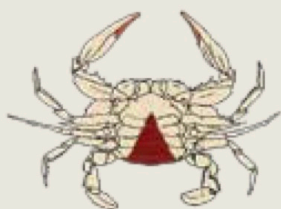


## Updates to Blue Crab Regulations

### Permanent Ban on Harvest of Immature Female Blue Crabs



#### Immature Female

An immature (adolescent) female has an inverted "V" or triangular shaped apron and red-tipped claws.



#### Mature Female

A mature (adult) female has an inverted "U" or bell-shaped apron and red-tipped claws.

- No commercial harvest of immature females, regardless of size.
- May keep incidental take of no more than 2% of total number of crabs possessed.
- Exemption for crabs in pre-molt stage for processing as softshell; must be in peeler/buster box.

### Crab Trap Escape Rings Requirement

- Each crab trap must have at least three escape rings, 2 3/8<sup>th</sup> inches in inside diameter (not including ring material).
- At least two must be in the upper chamber flush, or even with, the baffle.
- One ring must be in the lower chamber, no greater than one mesh length from the trap floor.
- **Beginning July 1, 2022, all escape rings shall be located no greater than one mesh length from the corners.**

